



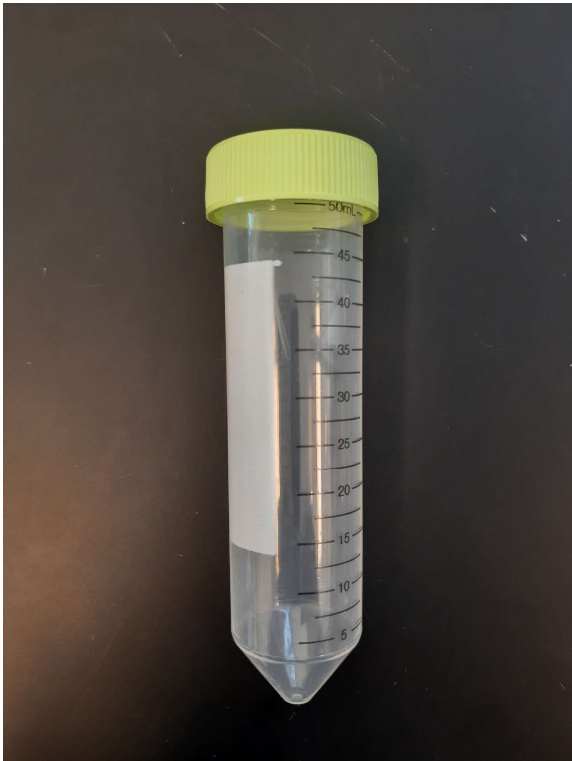
50 mL Blue Cap Tube

Tests:

- Total Nitrogen
- Nitrate-Nitrite Nitrogen (NOX)
- Nitrogen Ammonia
- COD

Preservation concerns:

- Keep sample between 0-6° C
- Samples must be acidified with concentrated sulfuric acid within 24hrs of collection
- Ammonia samples will benefit from having little/no headspace and being acidified as soon as possible after collection.



50 mL Green Cap Tube

Tests:

- Chloride
- Silica
- IC Anions
- IC Anions Nitrate/Nitrite
- IC Anions Sulfate
- Glyphosate

Preservation concerns:

- Silica, IC Anions, Glyphosate must be kept between 0-6° C
- Can use one 50 mL Green Cap Tube for all IC tests



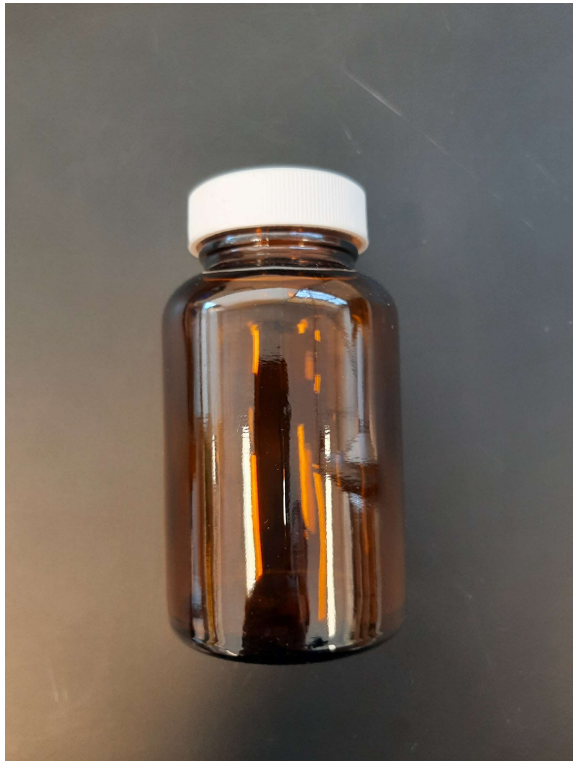
60 mL Glass Tube

Tests:

- Phosphorus Total
- Phosphorus Dissolved
- Phosphorus Ortho

Preservation concerns:

- Do not freeze
- Fill to line
- Phosphorus Ortho must be kept between 0-6° C
- All dissolved tests must be filtered (0.45 µm filter)



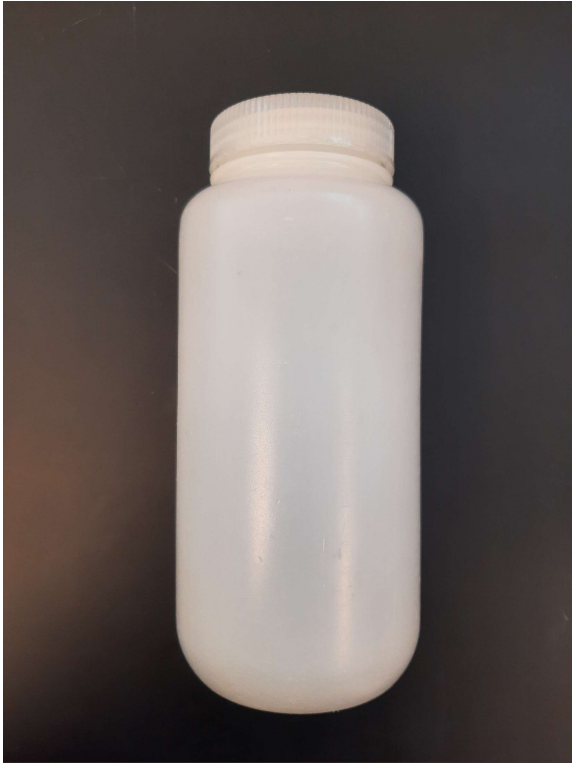
250 mL Amber Glass

Tests:

- NPOC
- NPOC Dissolved
- Inorganic Carbon Total
- Inorganic Carbon Dissolved

Preservation concerns:

- Keep sample between 0-6° C
- Keep sample out of light
- All dissolved tests must be filtered (0.45 µm filter)



1 L Round Plastic

Tests:

- Total Suspended Solids

Preservation concerns:

- Keep sample between 0-6° C



250 mL Square Plastic

Tests:

- Alkalinity
- Turbidity

Preservation concerns:

- Keep sample between 0-6° C

125mL Round Plastic, certified clean



Tests:

- Metals
- Metals Dissolved
- Metals Earth
- Metals Organic Aluminum
- Metals Landfill
- Metals Landfill Dissolved
- Metals Acid Rain
- Metals Acid Rain Organic Aluminum
- Mercury
- Mercury Dissolved
- Conductivity

Preservation concerns:

- Conductivity must be kept between 0-6° C
- Conductivity samples should have no headspace when filled
- Metals samples (except Organic Aluminum) must be acidified with concentrated nitric acid 24 hours before testing
- All dissolved test must be filtered (0.45 μm filter)



120 mL IDEXX

Tests:

- Environmental Water
 - Coliform, E. coli, Presence/Absence
 - Coliform, E.coli MPN

Preservation concerns:

- Do not freeze
- Keep sample between 0-6° C
- Keep bottle closed until ready to sample
- Fill to 100mL fill line



120 mL IDEXX with Thiosulfate

Tests:

- Drinking Water
 - Coliform, E. coli, Presence/Absence
 - Coliform, E.coli MPN

Preservation concerns:

- Do not freeze
- Keep sample between 0-6° C
- Keep bottle closed until ready to sample
- Fill to 100mL fill line



250 mL Round Plastic

Tests:

- Gran Alkalinity

Preservation concerns:

- Keep sample between 0-6° C
- Should have no headspace when filled



1 L Amber Glass

Tests:

- Neonic CHMetabs
- Pesticide Monitoring

Preservation concerns:

- Keep sample between 0-6° C
- Keep out of light